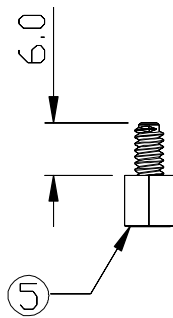
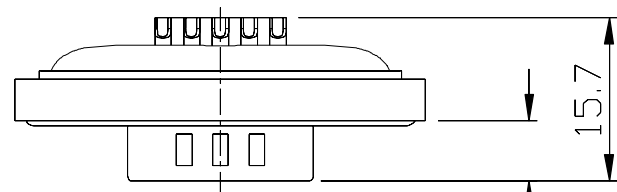
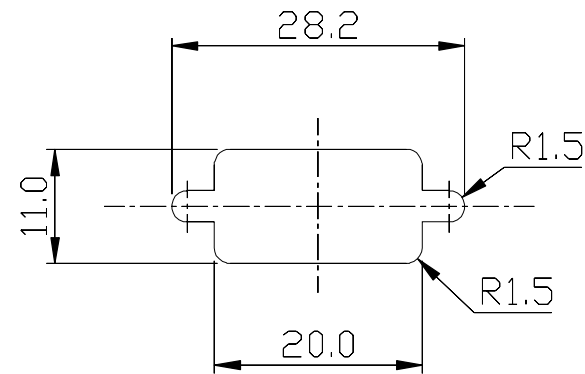


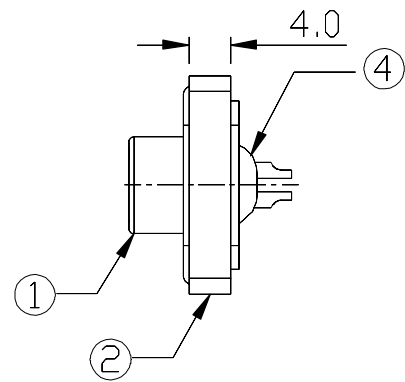
| REV. | DESCRIPTION | DATE |
|------|-------------|--------------|
| A | RELEASE | Sep.12, 2018 |



Screws on The Separate Bag



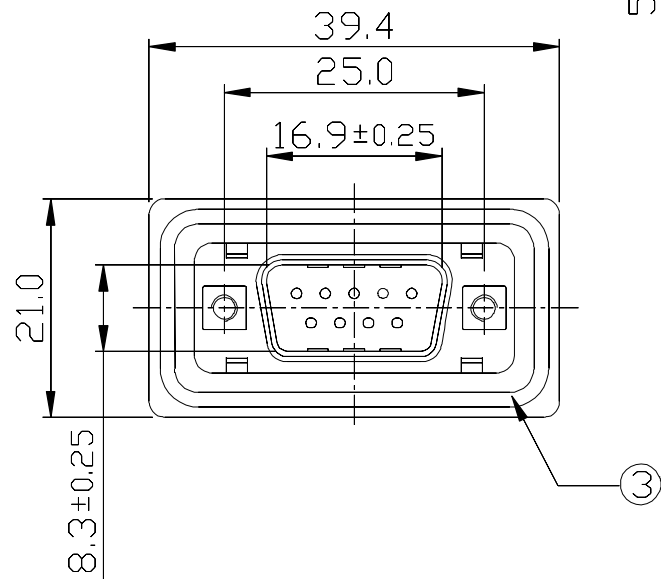
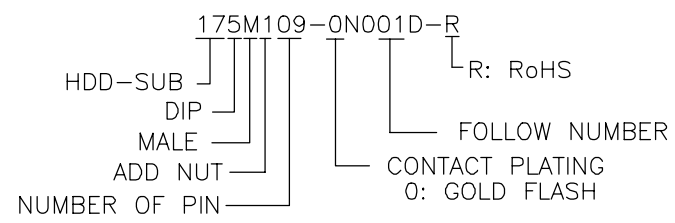
Recommend Panel Cut-Out



Notes: (Unless Otherwise Specified)

1. Waterproof Rate : IP68.
2. Recommend Panel Thickness : 1.2 to 2.0 mm.
3. Recommend Screw Torque: 2.5~3 Kgf-cm.
4. RoHS Compliance.

Part Number Information:



Materials:

| Item | Part Name | Material/Finish | Q'ty |
|------|---------------|--|------|
| 1 | 9P Male D-SUB | Shell: Cold Roll Steel, Finish: Ni Plated | 1 |
| | | Housing: Thermal Plastic, Color: Black | |
| | | Contacts: Copper Alloy, Finish: Gold Flash | |
| 2 | Housing | Thermal Plastic Color: Black | 1 |
| 3 | □-Ring | Silicone Color: Red | 1 |
| 4 | Glue | Epoxy Color: Black | |
| 5 | Screw | #4-40, Copper Alloy Finish: Ni Plated | 2 |

| | | |
|---|------------------------------|--------------------------------------|
| TOLERANCE .0=±0.50 .00=±0.20 .000=±0.05 ANG.=±1° | DRAWER <i>EXER</i> | ASTRON TECHNOLOGY CORP. |
| | CHECK <i>JYUNY</i> | |
| UNITS : mm | APP'D <i>JYUNY</i> | DRAW NO. R175M109-0N001D-R |
| | PRODUCT SPEC. — | SHEET 1 OF 1 |
| SCALE NONE | SIZE A5 | REV. A |