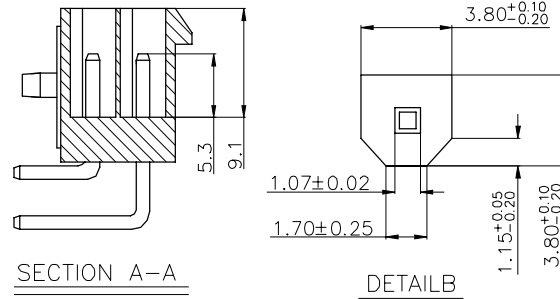
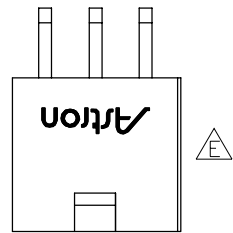


| REV. | DESCRIPTION | DATE |
|------|-------------|--------------|
| D | 09'1013 | Oct 15, 2009 |
| E | 09'1031 | Oct 27, 2009 |
| F | N14'12001 | Dec 01, 2014 |

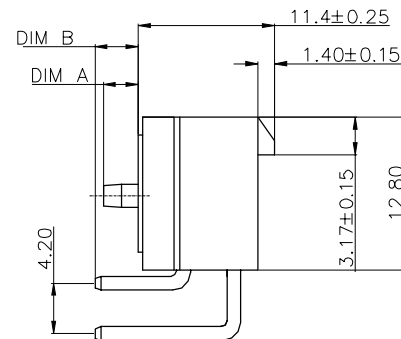
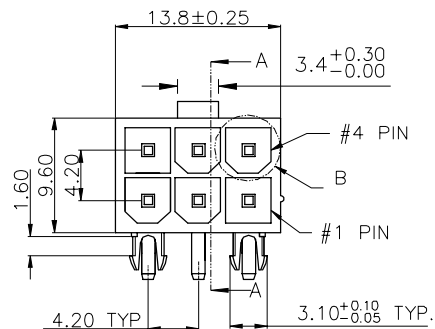


MATERIALS

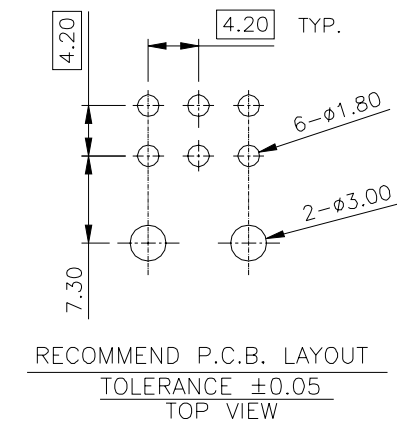
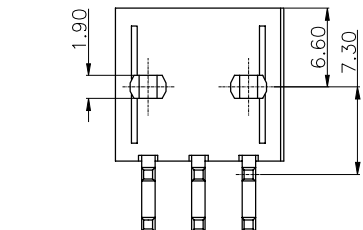
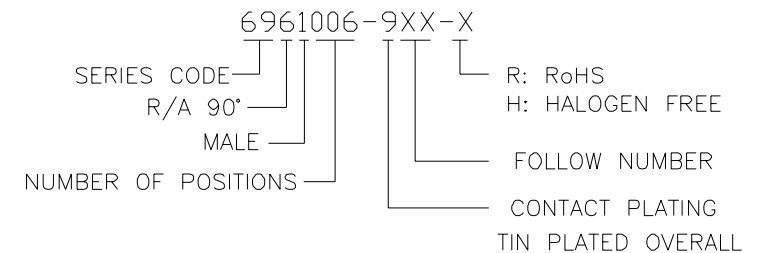
- HOUSING : HI.-TEMP.PLASTIC(UL 94V-0), BLACK.
- TERMINAL : COPPER ALLOY.
TIN PLATED OVERALL.

SPECIFICATION

- CURRENT RATING : 8 A MAX.
- DIELECTRIC WITHSTANDING VOLTAGE :
1500V AC R.M.S. FOR ONE MINUTE
- INSULATION RESISTANCE : 1000MΩ MIN.
AT 1000V DC.
- CONTACT RESISTANCE : 30mΩ MAX.
- OPERATING TEMPERATURE : -40° TO 105°C
- VOLTAGE RATING : 600V AC R.M.S.
- MAX. PROCESSING TEMPERATURE :
230°C FOR 60 SECONDS.
260°C FOR 10 SECONDS.



PART NUMBER INFORMATION (SEE THE TABLE)



| P/N | DIM A | DIM B | MATERIAL |
|---------------|-------|-------|--------------------------|
| 6961006-906-H | 2.40 | 2.40 | LCP(BLACK)(HALOGEN FREE) |
| 6961006-908-R | 2.40 | 3.50 | NYLON 6T(BLACK)(RoHS) |
| 6961006-915-R | 2.40 | 3.50 | NYLON 9T(BLACK)(RoHS) |
| 6961006-912-R | 2.90 | 3.60 | LCP(BLACK)(RoHS) |
| 6961006-903-R | 2.90 | 3.60 | LCP(MILK WHITE)(RoHS) |
| 6961006-913-H | 2.90 | 2.50 | LCP(BLACK)(HALOGEN FREE) |

| | | | | |
|---|------------|------------------------|-----------|---|
| TOLERANCE .0=±0.25 .00=±0.20 .000=±.XXX .0000=±0.05 ANG.=±3° | | DRAWER <i>Stony</i> | | ASTRON TECHNOLOGY CORP. |
| CHECK <i>Stony</i> | | APP'D <i>Rea</i> | | |
| UNITS : mm | | PRODUCT SPEC. | | |
| SCALE NONE | SIZE A4 | SHEET 1 OF 1 | REV. F | NAME POWER CONNECTOR 6P 4.20mm PITCH, W/AT LOGO R/A TYPE DRAW NO. R6961006-912-R |