

REV.	DESCRIPTION	DATE
E	09'1013	Oct 15, 2009
F	09'1031	Oct 27, 2009
G	N14'12001	Dec 01, 2014

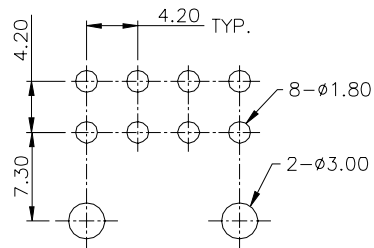
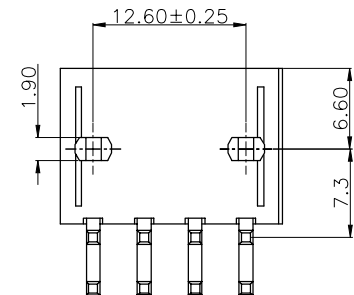
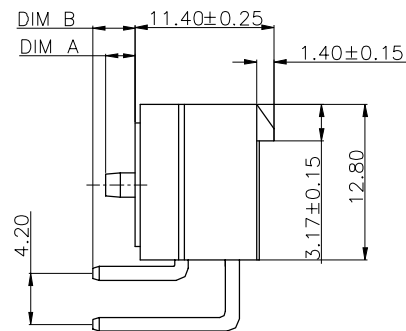
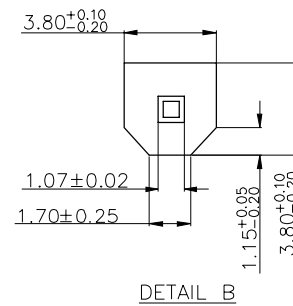
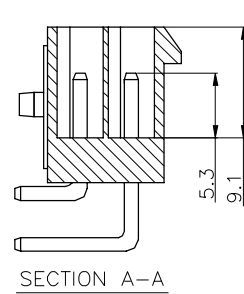
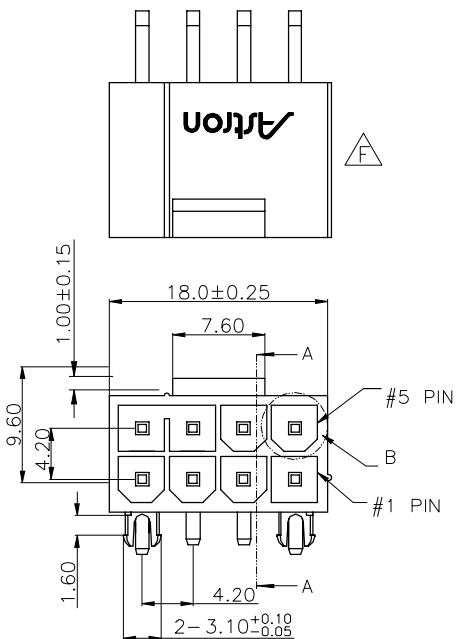
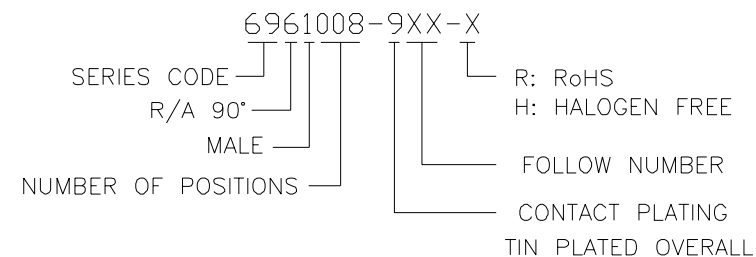
### MATERIALS

- HOUSING : HI.-TEMP.PLASTIC(UL 94V-0), BLACK.
- TERMINAL : COPPER ALLOY.  
TIN PLATED OVERALL.

### SPECIFICATION

- CURRENT RATING : 7 A MAX.
- DIELECTRIC WITHSTANDING VOLTAGE :  
1500V AC R.M.S. FOR ONE MINUTE
- INSULATION RESISTANCE : 1000M $\Omega$  MIN.  
AT 1000V DC.
- CONTACT RESISTANCE : 30m $\Omega$  MAX.
- OPERATING TEMPERATURE : -40° TO 105°C
- VOLTAGE RATING : 600V AC R.M.S.
- MAX. PROCESSING TEMP. :  
230°C FOR 60 SECONDS.  
260°C FOR 10 SECONDS.

### PART NUMBER INFORMATION (SEE THE TABLE)



RECOMMEND P.C.B. LAYOUT  
TOLERANCE  $\pm 0.05$   
TOP VIEW

P/N	DIM A	DIM B	MATERIAL
6961008-906-H	2.40	2.40	LCP(BLACK)(HALOGEN FREE)
6961008-907-R	2.40	3.50	NYLON 6T(BLACK) (RoHS)
6961008-916-R	2.40	3.50	NYLON 9T(BLACK) (RoHS)

TOLERANCE .0=±0.25 .00=±0.20 .000=±0.05 .0000=±. ANG.=±3°	DRAWER <i>Stony</i> CHECK <i>Stony</i>	 ASTRON TECHNOLOGY CORP.	
UNITS : mm	APP'D <i>Rec</i>		NAME POWER CONNECTOR 8P 4.20mm PITCH, W/AT LOGO R/A TYPE
SCALE NONE	SIZE A4	PRODUCT SPEC. —	DRAW NO. R6961008-906-H
SHEET 1 OF 1	REV. G		